



# School Site Council

November 2020

# Agenda for Today's Meeting

---

- Family Engagement Update
- Student Achievement Update

# Family Engagement Update

# What we heard from Conferences:

---

- **Positive Trends:** families feel positively about the school and are excited about the schedule change
- **Areas for Growth:** families need more help from the school getting familiar with all the apps and programs, so that they can help their children log in and turn in work.

# Family Survey Results ([link](#))

---

## Overview:

- Taken during October
- 61 families took the survey

# Positive Trends from Family Survey

---

**94%** of families said they felt supported by the school during this time.

**97%** of families know which resources are available to support them during this time.

**97%** of families say their child is successfully engaging in distance learning.

# Areas for Growth:

---

A number of families wrote in the comments that they need help with learning all of the programs their child is using.

Families are requesting that directions for instructional materials be translated as often as possible so they can help their children.

A number of families mentioned that 6 hours on Zoom is too much for their child.

# Adjustments based on feedback:

---

New Schedule & Parent Office Hours!





# Discussion Questions

---

- **Guiding Questions:**
  - What are the strengths of parent office hours so far?
  - What would we like to see more or less of during this time?
  - What are some next steps for family engagement?

# Reopening Discussion

---

68% of families said on the family survey that they are somewhat nervous or very nervous about sending their child back to school for in-person instruction.

- What are your biggest concerns about sending your child back to school?
- What would you need to see from the school to feel comfortable sending your child back?
- What other factors should we be considering as plans are starting to be made for reopening?

# Student Achievement Update

# Assessment Cycle Purpose & Review

---

Two benchmark assessments taken 4x/year that provide data on students' academic progress

- NWEA MAP
  - compares students' progress in math and reading to students nationally
- STAR Reading
  - measures students' reading level

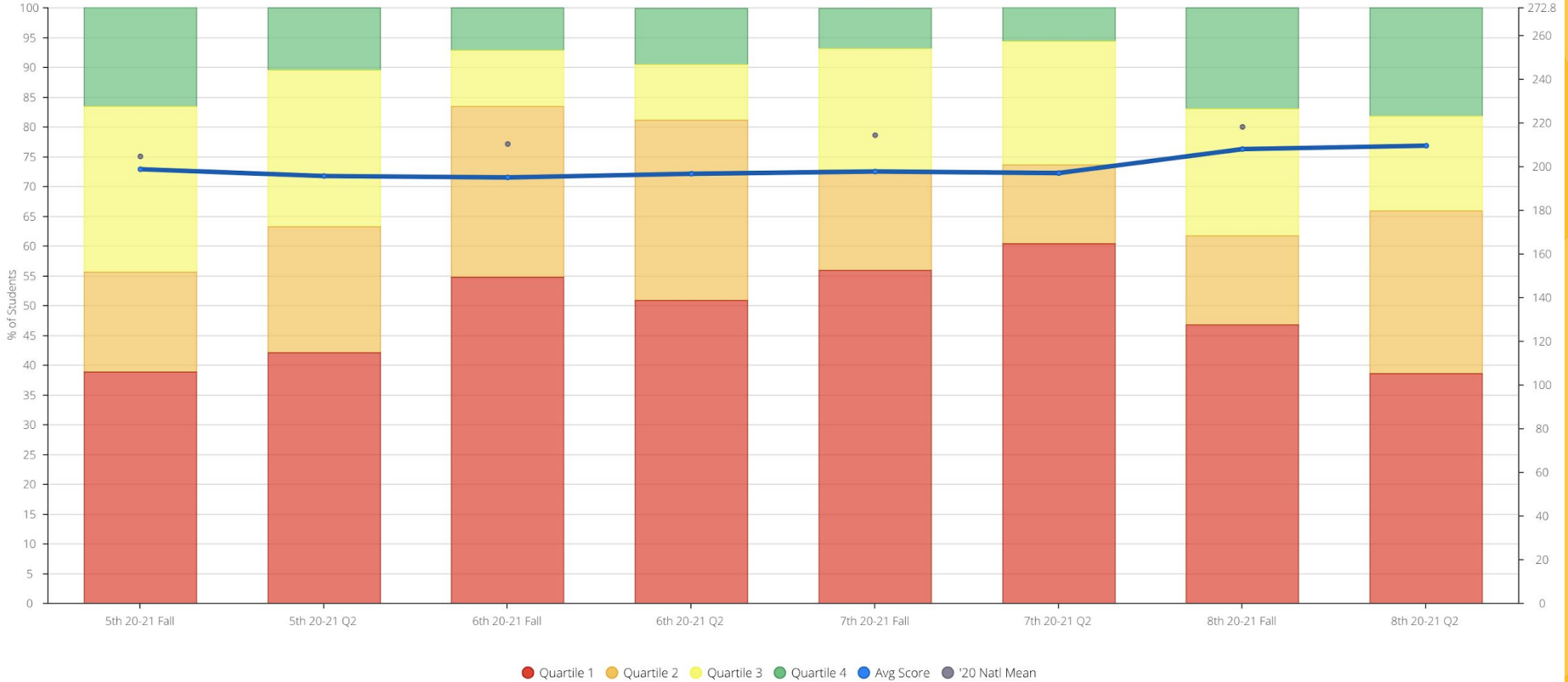
# Reading Data Highlights

MAP-Reading By Grade

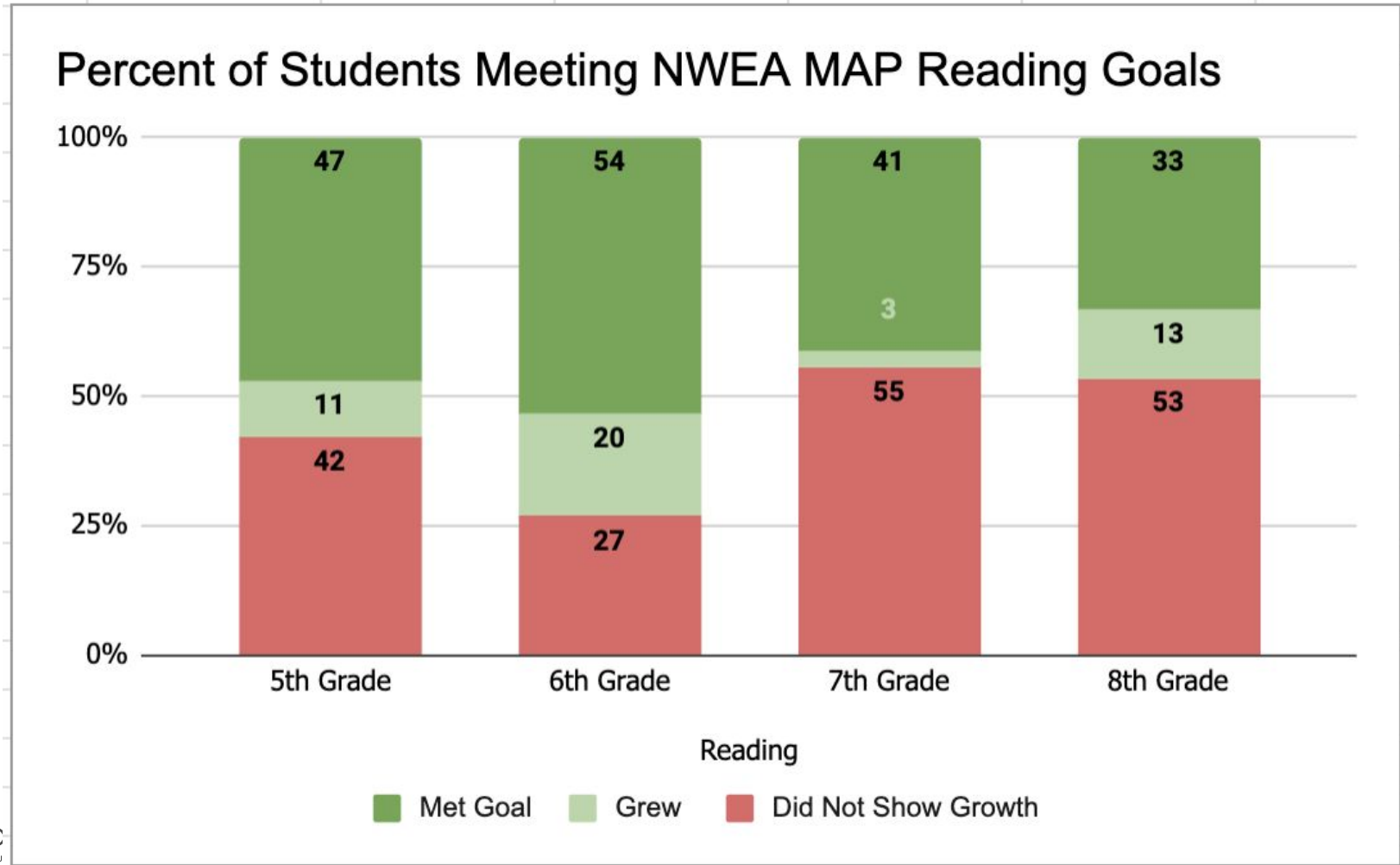
MAP



Quartiles ▼



# Reading Data Highlights



# Reading Data Highlights

---

On the STAR Assessment, many students made growth in their Lexile scores, which measures their reading level.

We administered the STAR early literacy assessment to Kindergarten and 1st grade as well this quarter. We are waiting on STAR data to be ready for whole-group analysis, but early results are exciting for individual students!

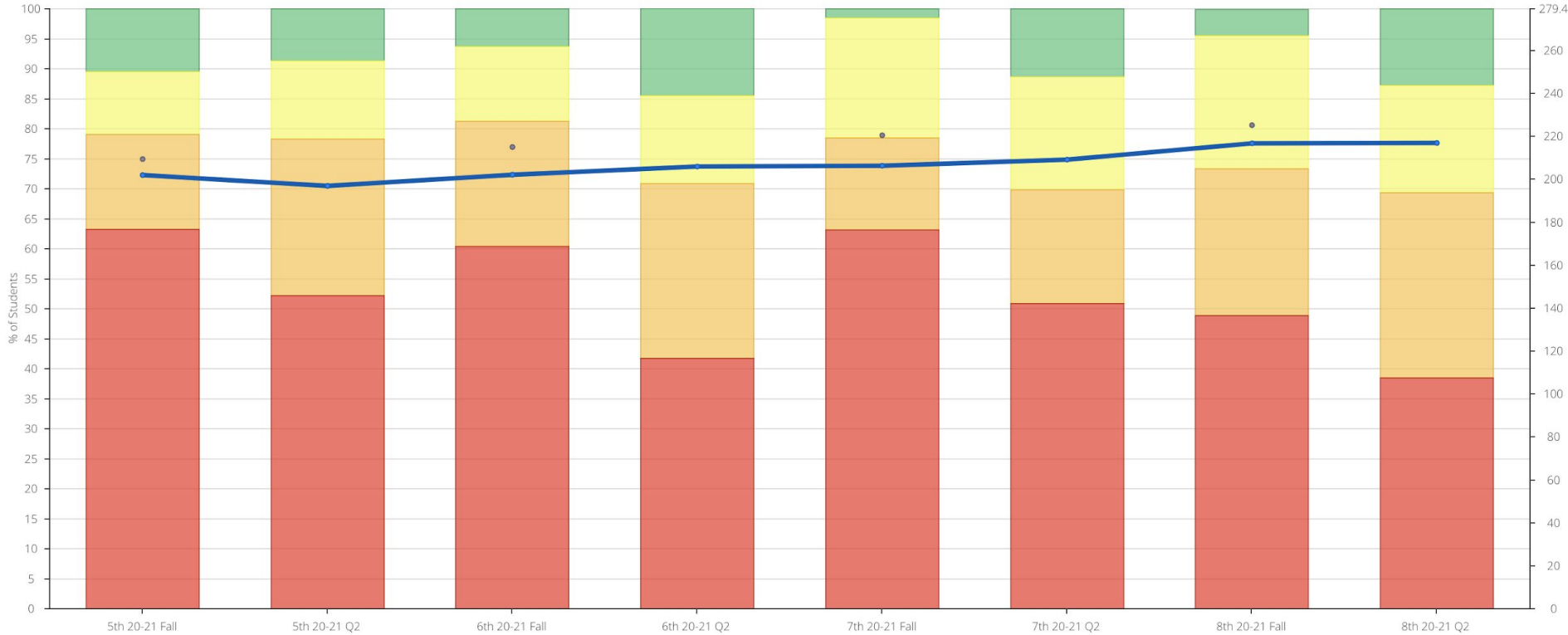
# Math Data Highlights

MAP-Math By Grade

MAP



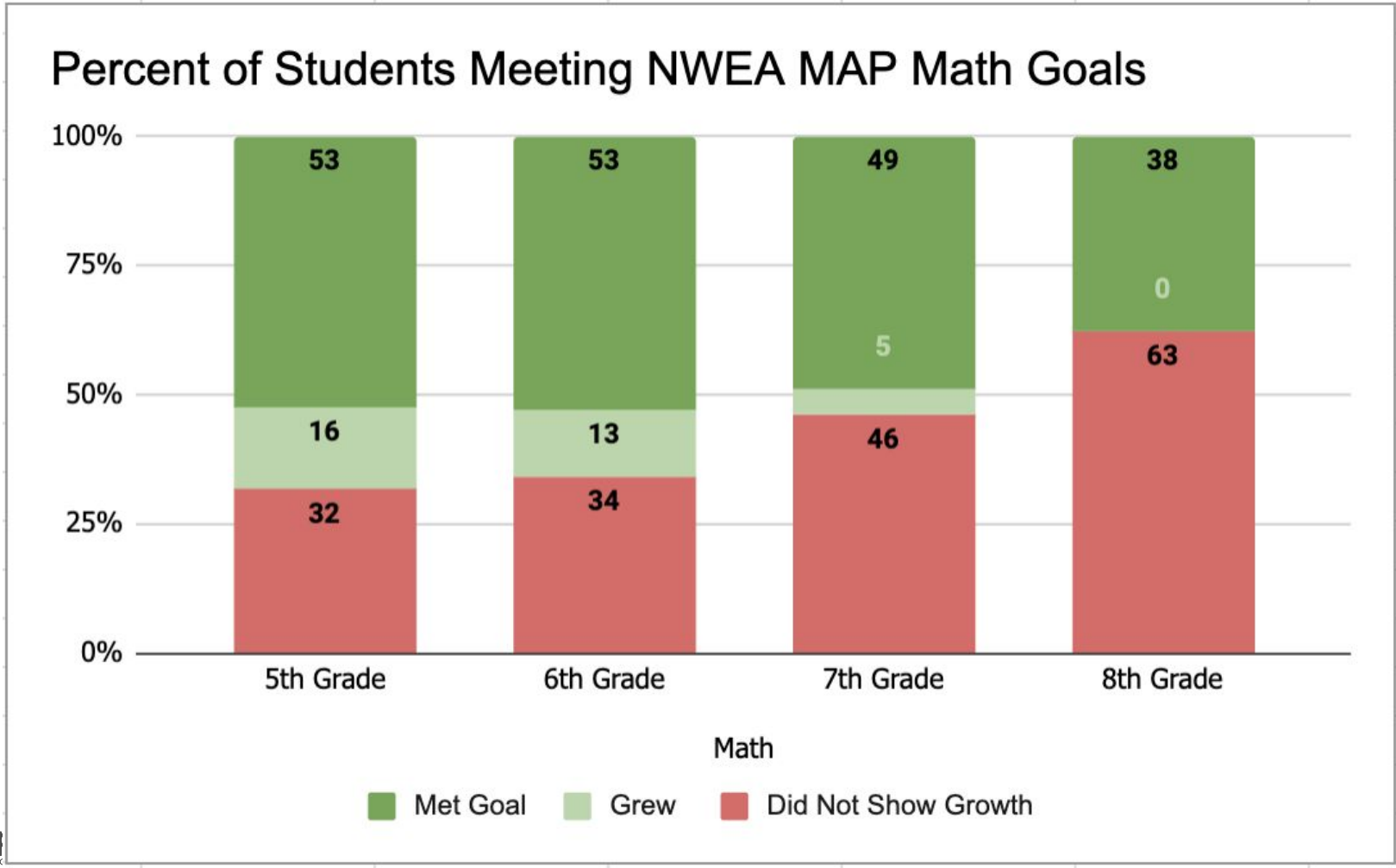
Quartiles ▾



● Quartile 1 ● Quartile 2 ● Quartile 3 ● Quartile 4 ● Avg Score ● '20 Natl Mean



# Math Data Highlights



# 1st Grade MAP Data

## Reading



Alpha: Jose Hernandez School 1st 20-21 Fall

## Math



Alpha: Jose Hernandez School 1st 20-21 Q2

# How does our new schedule support these data?

---

- Shorter whole-group time on Zoom
- More time for students to complete asynchronous assignments
- Assigned small-group support for students who based on assessment and grade data
- Office Hours available daily for students who need help on their asynchronous assignments or who have questions/need extra help from their teacher



Closing

# Next Steps

---

- Schedule Next Meeting
- Agenda for Next Meeting